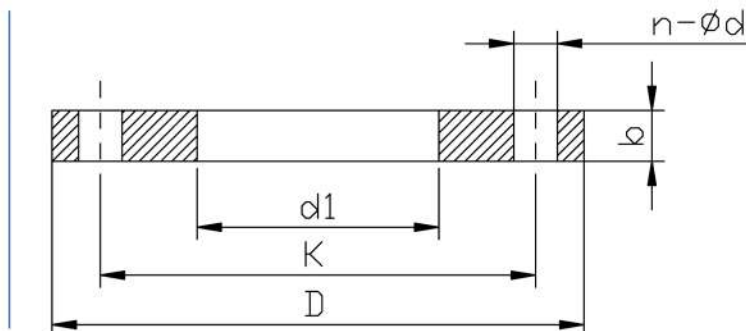




Flangia piana a saldare

PN 10

NORME PRODOTTO: EN 1092-1-1
 MATERIALI: ACCIAIO AL CARBONIO



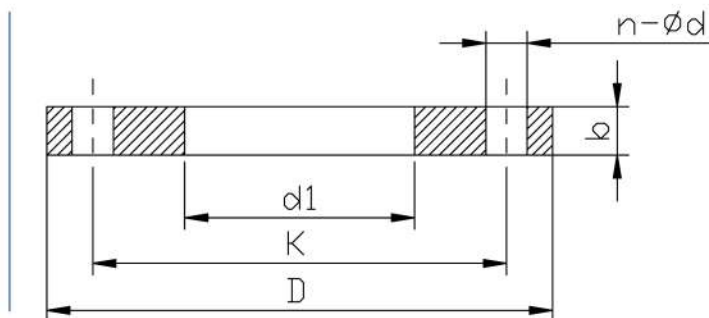
DN	øTUBO ISO	d1 ISO	K	D	n-ød	b	VITE
15	21.3	22	65	95	4-14	14	M12
20	26.9	27.5	75	105	4-14	16	M12
25	33.7	34.5	85	115	4-14	16	M12
32	42.4	43.5	100	140	4-18	18	M16
40	48.3	49.5	110	150	4-18	18	M16
50	60.3	61.5	125	165	4-18	20	M16
65	76.1	77.5	145	185	8-18	22	M16
80	88.9	90.5	160	200	8-18	24	M16
100	114.3	115.5	190	235	8-22	26	M20
125	139.7	141.5	220	270	8-26	28	M24
150	168.3	170.5	250	300	8-26	30	M24
200	219.1	221.5	320	375	12-30	36	M27
250	273	276.5	385	450	12-33	42	M30
300	323.9	327.5	450	515	16-33	52	M30
350	355.6	359.5	510	580	16-36	58	M33
400	406.4	411	585	660	16-39	65	M36
450	457.2	462	610	685	20-39	66	M36
500	508	513.5	670	755	20-42	72	M39
600	609.6	616.5	795	890	20-48	84	M45



Flangia piana a saldare

PN 16

NORME PRODOTTO: EN 1092-1-1
 MATERIALI: ACCIAIO AL CARBONIO



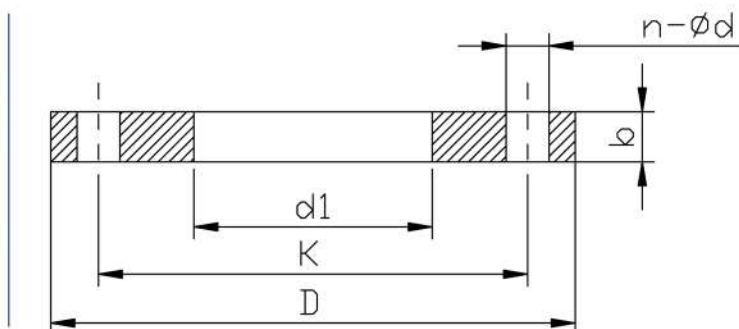
DN	øTUBO ISO	d1 ISO	K	D	n-ød	b	VITE
15	21.3	22	65	95	4-14	14	M12
20	26.9	27.5	75	105	4-14	16	M12
25	33.7	34.5	85	115	4-14	16	M12
32	42.4	43.5	100	140	4-18	18	M16
40	48.3	49.5	110	150	4-18	18	M16
50	60.3	61.5	125	165	4-18	20	M16
65	76.1	77.5	145	185	8-18	20	M16
80	88.9	90.5	160	200	8-18	20	M16
100	114.3	115.5	180	220	8-18	22	M16
125	139.7	141.5	210	250	8-18	22	M16
150	168.3	170.5	240	285	8-22	24	M20
200	219.1	221.5	295	340	12-22	26	M20
250	273	276.5	355	405	12-26	29	M24
300	323.9	327.5	410	460	12-26	32	M24
350	355.6	359.5	470	520	16-26	35	M24
400	406.4	411	525	580	16-30	38	M27
450	457.2	462	585	640	20-30	42	M27
500	508	513.5	650	715	20-33	46	M30
600	609.6	616.5	770	840	20-36	55	M33



Flangia piana a saldare

PN 40

NORME PRODOTTO: EN 1092-1-1
 MATERIALI: ACCIAIO AL CARBONIO



DN	øTUBO ISO	d1 ISO	K	D	n-ød	b	VITE
15	21.3	22	65	95	4-14	14	M12
20	26.9	27.5	75	105	4-14	16	M12
25	33.7	34.5	85	115	4-14	16	M12
32	42.4	43.5	100	140	4-18	18	M16
40	48.3	49.5	110	150	4-18	18	M16
50	60.3	61.5	125	165	4-18	20	M16
65	76.1	77.5	145	185	8-18	22	M16
80	88.9	90.5	160	200	8-18	24	M16
100	114.3	115.5	190	235	8-22	26	M20
125	139.7	141.5	220	270	8-26	28	M24
150	168.3	170.5	250	300	8-26	30	M24
200	219.1	221.5	320	375	12-30	36	M27
250	273	276.5	385	450	12-33	42	M30
300	323.9	327.5	450	515	16-33	52	M30
350	355.6	359.5	510	580	16-36	58	M33
400	406.4	411	585	660	16-39	65	M36
450	457.2	462	610	685	20-39	66	M36
500	508	513.5	670	755	20-42	72	M39
600	609.6	616.5	795	890	20-48	84	M45